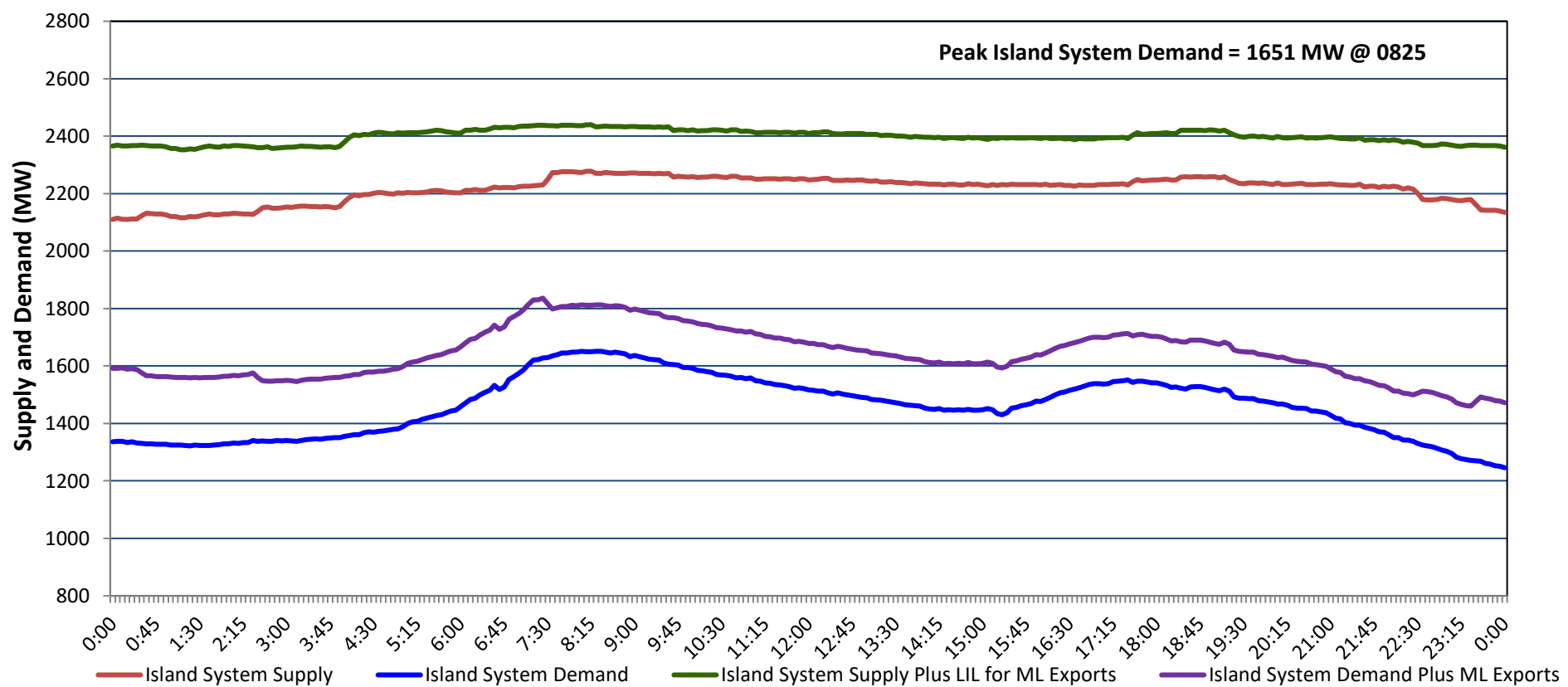


Newfoundland Labrador Hydro (NLH) Supply and Demand Status Report Filed Monday, February 03, 2025

Section 1 Island Interconnected System - Supply, Demand & Exports Actual 24 Hour System Performance For Friday, January 31, 2025



Island Supply Notes For January 31, 2025

A As of 0000 hours, October 20, 2024, Holyrood Unit 1 unavailable due to forced extension to planned outage (170 MW).

Section 2 Island Interconnected System - Supply, Demand & Outlook

Sat, Feb 01, 2025	Island System Outlook ²	Seven-Day Forecast	Island System Daily Peak Demand (MW)	
			Forecast ⁸	Adjusted ⁶
Island System Supply: ⁴	2,126 MW	Saturday, February 1, 2025	1,515	1,417
NLH Island Generation: ^{3,7}	1,525 MW	Sunday, February 2, 2025	1,580	1,482
NLH Island Power Purchases: ⁵	110 MW	Monday, February 3, 2025	1,590	1,492
NP and CBPP Owned Generation:	205 MW	Tuesday, February 4, 2025	1,370	1,274
LIL/ML Net Imports to Island: ⁹	286 MW	Wednesday, February 5, 2025	1,580	1,482
		Thursday, February 6, 2025	1,635	1,536
7-Day Island Peak Demand Forecast:	1,635 MW	Friday, February 7, 2025	1,360	1,264

Island Supply Notes For February 01, 2025

- Notes:
1. Generation outages for running and corrective maintenance are included. These are not unusual for power system operations. They generally do not impact customer supply. Hydro schedules outages to system equipment whenever possible to coincide with periods when customer demands are low and sufficient supply reserves are available. However, from time to time equipment outages are necessary and reserves may be impacted.
 2. As of 0800 Hours.
 3. Gross continuous unit output.
 4. Gross output from all Island sources (including Note 3).
 5. NLH Island Power Purchases include: ML Imports, Exploits Generation, Rattle Brook, Star Lake, Wind Generation and capacity assistance (when applicable).
 6. Adjusted for interruptible load and the impact of voltage reduction when applicable.
 7. Due to limitations inherent in the design of combustion turbines, the output of combustion turbines may be reduced in the event that ambient temperatures exceed the threshold required for full rated output. This threshold is dependent on the design of each turbine.
 8. Does not include ML Exports.
 9. LIL Import sunk in the Island System. Actual LIL flows will be restricted by various system conditions including, but not limited to, Island Load, ML Exports and Avalon Unit status.

Section 3 Island Peak Demand and Exports Information Previous Day Actual Peak and Current Day Forecast Peak

Fri, Jan 31, 2025	Island Peak Demand ¹⁰	8:25	1,651 MW
	Exports at Peak		162 MW
	LIL Net Imports to Island		8,412 MWh
Sat, Feb 01, 2025	Forecast Island Peak Demand		1,515 MW

Notes: 10. Island Demand is supplied by NLH generation and purchases, LIL Imports plus generation owned and operated by Newfoundland Power and Corner Brook Pulp & Paper (Deer Lake Power, DLP).